

---

## Quick Guide ARGUS Configuration Tool

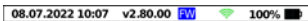
The ARGUS Configuration Tool is a PC software based on the user surface of the ARGUS 300 and ARGUS 260, allowing configuration files for these two devices to be configured easily and intuitively.



**The ARGUS Configuration Tool supports the following operating systems (64-bit only): Windows 8 and Windows 10.**



**Please use only the version of the ARGUS Configuration Tool that is identical to your firmware version. Other versions are not compatible.**



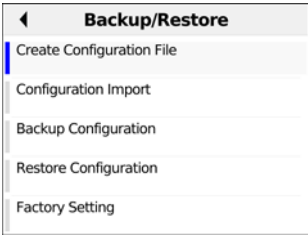
ARGUS Info	
Type:	ARGUS 300
SW Version:	R2.80.00D_ [884-20]

You can read the firmware version of your ARGUS in the status bar at the top. In addition, it will be displayed in the ARGUS Info after entering \*1.

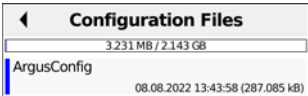
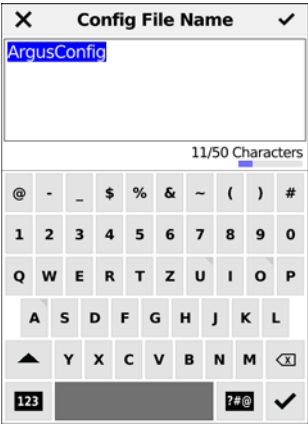
### Unzip the file

Please unzip the file to start. The downloaded ZIP file is located in the "Downloads" folder on your computer. To extract the file, right-click on it and select "Extract All". After the files have been extracted, you can start the "ArgusConfigTool" application in the corresponding folder, e.g. "001\_ArgusConfigTool\_Software\_-\_V\_2\_80".

Creating a configuration file



To create a configuration file in the ARGUS, press the wheel key to access the device settings. Now select "Backup/Restore" and then "Create Configuration File".

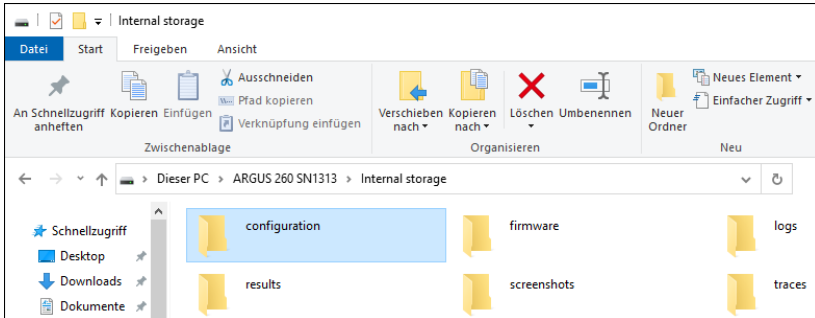


The configuration file can now be saved. A file name of up to 50 characters can be entered for this purpose.

---

## Loading a configuration into the ARGUS Configuration Tool

To load a configuration from the ARGUS into the ARGUS Configuration Tool, connect the ARGUS to your computer via USB.



Now copy the desired configuration file from the "configuration" folder to your computer.

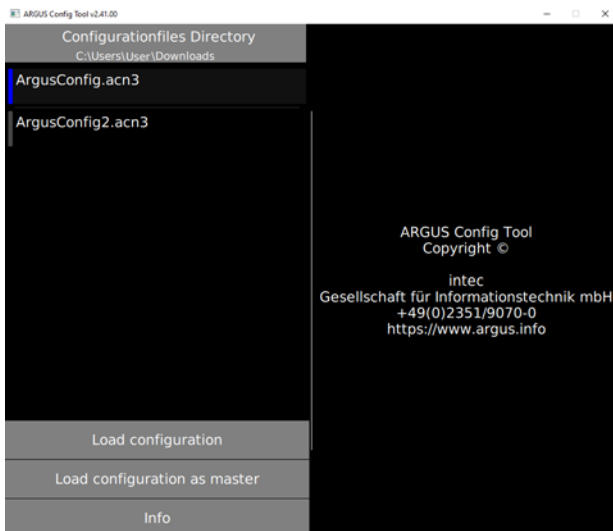


Configurationfiles Directory  
C:\Users\User\Desktop

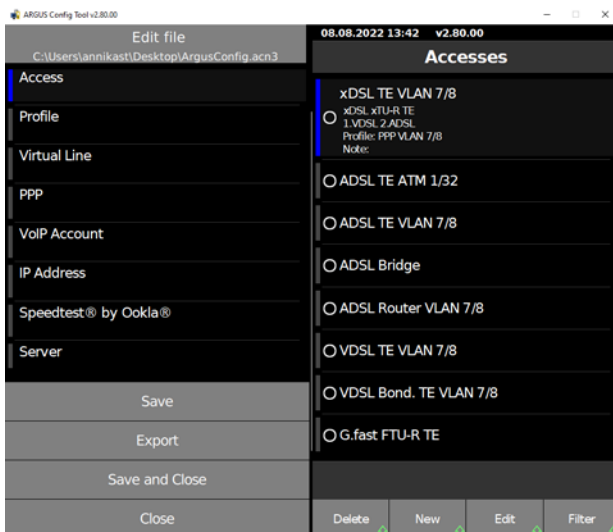
Start the ARGUS Configuration Tool (left image: application icon) and click on "Configurationfiles Directory".



Now select the folder on your computer to which you previously copied the configuration file.

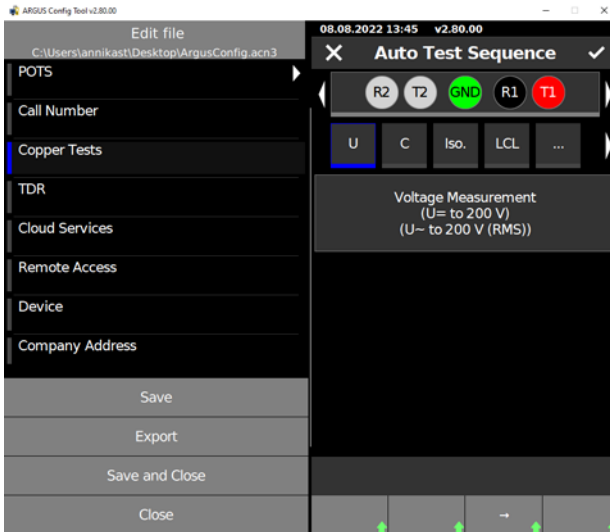


The configurations stored there will now be displayed in the ARGUS Configuration Tool. Select the configuration that is to be loaded into the ARGUS Configuration Tool (here: ArgusConfig.acn3). The selected configuration is marked with a blue bar. Click on "Load configuration" to load it.

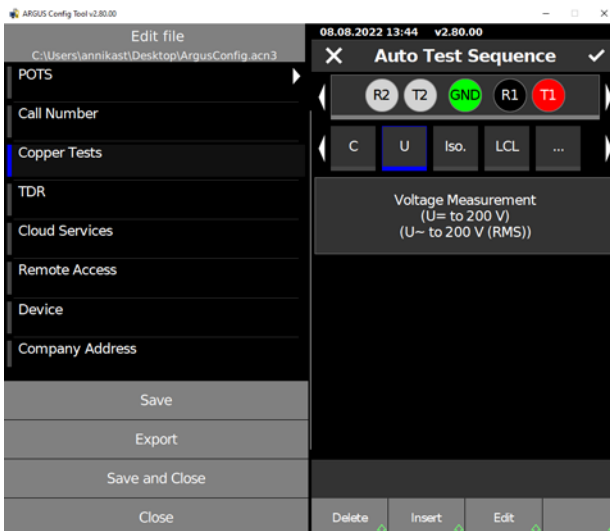


Now the configuration can be edited directly in the ARGUS Configuration Tool.

If you select "Load configuration as master", the configuration is loaded as master configuration. All possible combinations of SW options and modules can be configured in it.

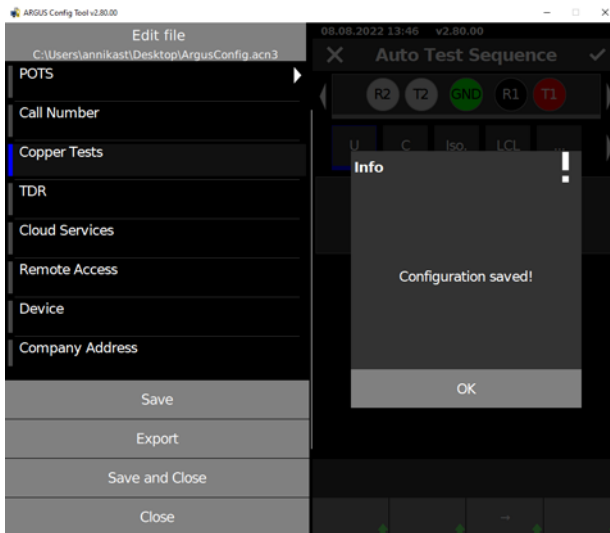


For some functions, it is necessary to press the Shift key in the ARGUS. This is indicated here by the green arrow. In the ARGUS Configuration Tool, press the F10 key on the PC keyboard instead.

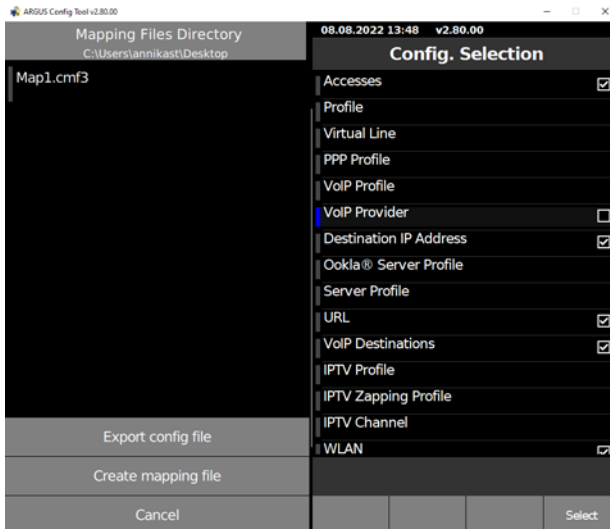


The green arrows are now filled in (=activated shift key) and further functions are possible,

in this example moving the copper autotests via the now displayed arrows to the right and left.



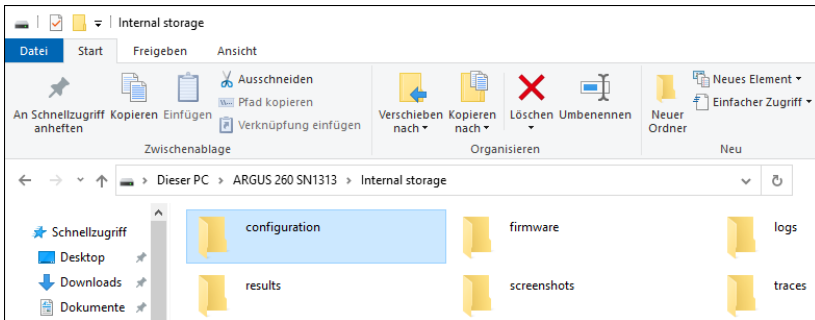
The configuration can be saved via "Save". The message "Configuration saved!" then appears.



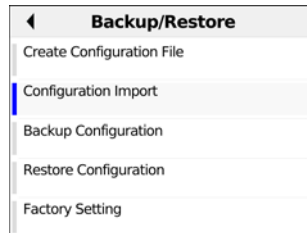
With "Create mapping file" the selection of the configuration points can be saved in a mapping file.

If you click on "Export", you can select or deselect the configurations in the "Config. Selection" to select or deselect the configurations that are to be exported. This is possible either by clicking on the "Select" or "Deselect" softkey, or by clicking on the box where the check mark is removed or added.

By clicking on "Export config file" you can select the location where the file should be saved.



It can then be imported back into the ARGUS by connecting it to the computer via USB and copying the configuration file into the "configurations" folder.



In the ARGUS, press the wheel key to access the settings. There, select "Backup/Restore" and then "Configuration Import".

Configuration Files	
3.170 MB / 2.143 GB	
ArgusConfig	08.08.2022 13:43:58 (287.085 kB)
ArgusConfig2	08.07.2022 10:17:38 (287.097 kB)

Configuration Files

Apply configuration file 'ArgusConfig'?

No

Yes

The available configuration files are now displayed. After selecting the "Apply" softkey, it must be confirmed that the configuration file is to be applied. The ARGUS is then restarted and the configuration is applied.

Configuration Files	
3.231 MB / 2.143 GB	
ArgusConfig	08.08.2022 13:43:58 (287.085 kB)
ArgusConfig2	08.07.2022 10:17:38 (287.097 kB)

Configuration Files

3.272 MB / 2.143 GB

ArgusConfig

08.08.2022 13:44:34 (287.085 kB)

ArgusConfig2

08.08.2022 13:43:58 (287.085 kB)

3 Selected Elements

Delete

Order

If you select the "Select all" softkey, both configuration files are marked with a blue bar. Using the "Menu" softkey, you can now either delete or sort the files.

X

File Order

✓

☐ Name Ascending

☐ Name Descending

☐ Date Ascending

☒ Date Descending

The files can be sorted in ascending or descending order by name or date.