

- Updating - ARGUS Tester Firmware

Instructions for the Firmware Update Program (v 3.1x)

Prepared by:
intec Gesellschaft für Informationstechnik mbH, Lüdenscheid
Last changed on 3rd June 2008

Should you have any further questions, please contact us:

intec Gesellschaft für Informationstechnik mbH, Rahmedestr. 90, 58507 Lüdenscheid, Germany
Telephone: +49 2351 / 9070-90
E-Mail: support@argus.info
Web: <http://www.argus.info>

Contents

1	Step 1 of 5 – Setting the Interface and Baudrate	2
2	Step 2 of 5 – Detecting the Connected Tester	4
3	Step 3 of 5 – Verifying the Selection / Starting the Update	5
4	Step 4 of 5 – The Update Procedure	6
5	Step 5 of 5 – Conclusion of the Update	8

Preparations:

To start off, download the file (available in ZIP format) from:

<http://www.argus.info/service/download/aktuelle-downloads/argusupdatetool/>

After you have the file on your PC, unpack the ZIP archive into a separate folder. Afterwards, double-click on the file, setup.exe, to begin the installation.

If you have ordered and already installed WINplus or WINanalyse, the Update Tool was already installed at the same time – at least if you did a standard installation.

From this point onwards, simply follow the instructions on the screen and proceed through the individual steps of the installation procedure by clicking on “Next”.

After the installation is completed, you can click on the link at “Start / Programs / Argus Update-Tool” and open the “ARGUS® Update Tool”.



Figure 1: The Link's Icon under Windows XP.

At this point you do not yet need to have an ARGUS® tester connected.

Please pay close attention to the instructions shown in the Update Tool's window as well as any messages shown on the ARGUS® display. The update is not fully completed until the Update Tool has reported that the update was successful and the ARGUS® - after it has been automatically restarted by Update Tool – displays its usual startup screen.

Do not disconnect the ARGUS® from its power supply and the PC until the Update Tool has reported that the update has been completed and it has successfully restarted the ARGUS®.

Disconnecting the ARGUS® from its power supply too soon, disconnecting it from the PC prematurely or switching the ARGUS® itself off too soon may cause substantial errors or may damage the tester to the extent that it must be sent in for repairs at your expense.

1 Step 1 of 5 – Setting the Interface and Baudrate

Once the Update Tool has been started, it will open the “Step 1 of 5” window in which you must select the interface (port) and the baudrate to be used for the update.

To update the tester using the USB interface, select the COM port, which is labeled “Argus over USB” (You will need to use this setting if you want to use a normal USB cable or the Serial-USB Adapter cable).

To perform an update using the serial adapter cable (dongle), which depending on the type is connected via a RJ11 or RJ45, select the correct COM port.

Instructions for Updating the ARGUS® Firmware

If you set the Baud to “Maximum”, the Update Tool will determine the maximum useable baudrate.

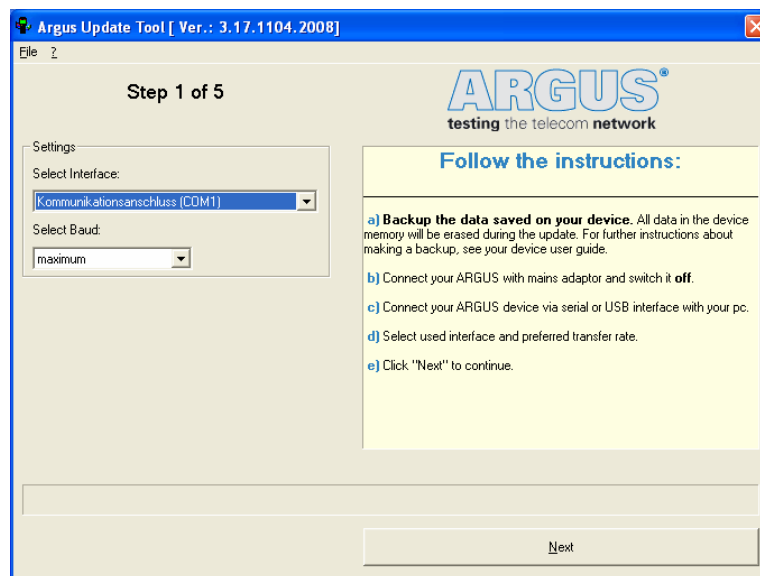


Figure 2: Step 1 of 5: Interface and Baudrate Settings.

Before you proceed with the update procedure, make certain that you have a backup all of the important data (test reports and profile configurations) currently on your tester, since this data may be deleted when performing an update.

Connect the ARGUS® to its power supply and make certain that this remains on. Use the serial or USB interface to connect the ARGUS® to the PC or notebook and make certain that this cable is not disconnected at any time during the update procedure.

Switch the ARGUS® **off**, before you click on “Next” to proceed to the next step!

If you click on the “?” on the left at the top in the menu bar, the “About” window will open in which you can find not only the version number but also other useful information and contact data.

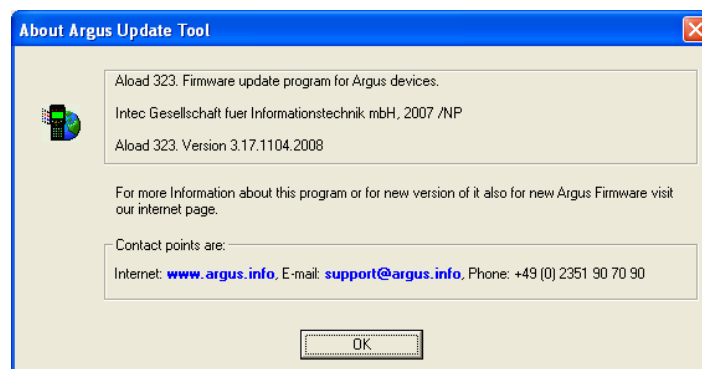


Figure 3: The “About” Window

2 Step 2 of 5 – Detecting the Connected Tester

After you click on “Next” in “Step 1 of 5”, the Update Tool will continue to the second step. When this window first opens, all of the selections are deactivated (gray).

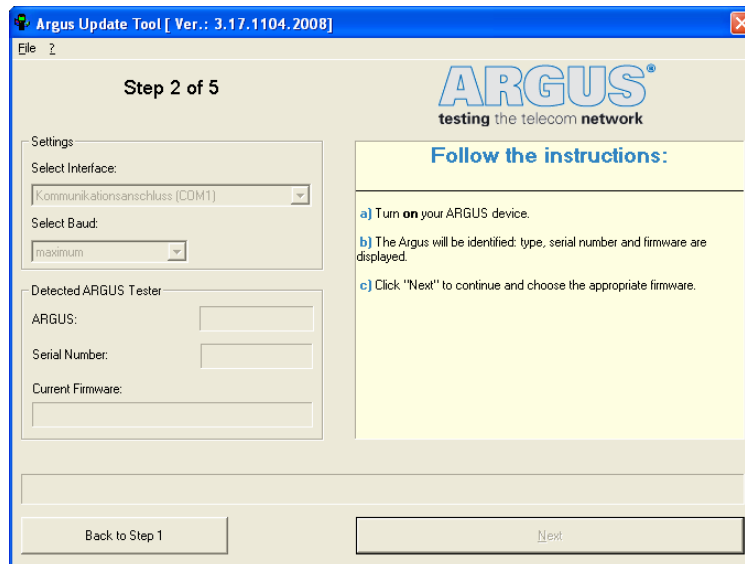


Figure 4: Step 2 before the ARGUS® is switched on – settings disabled.

If you follow the instructions in the pane on the right and switch the ARGUS® tester that is connected to the PC on, the Update Tool will automatically detect it and read out all of the information relevant for the update. The data read out from the tester will be displayed in the formerly disabled (gray) fields on the left under “Detected ARGUS Tester” (“Argus”, “Serial Number” and “Current Firmware”). The ARGUS® tester should now display the message “Waiting for DATA”.

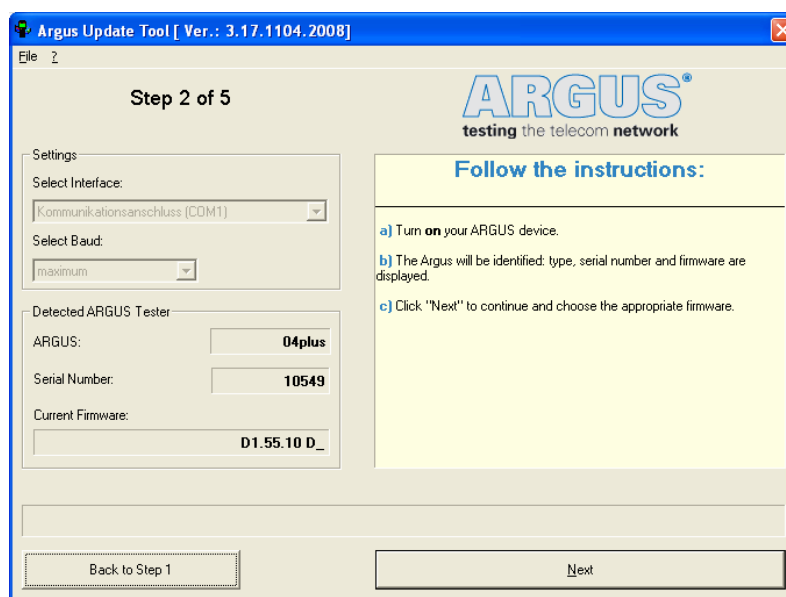


Figure 5: The connected ARGUS® was detected and the relevant information read out.

Instructions for Updating the ARGUS® Firmware

If a problem should occur at this stage, repeat this step by clicking on “Back to Step 1”, switch the ARGUS® tester off once more and again follow the instructions in the pane on the right. Once the connected ARGUS® tester is successfully detected, click on “Next” to open the dialogue box for selecting the firmware file (the file which should be loaded into the ARGUS® tester). If the desired update file is not stored in the same folder that was used the last time (the last used folder will be shown first as the default), click on “Browse” and then select the correct folder. In other words, at this point you should select the path to the folder in which you saved the file after downloading it from www.argus.info.

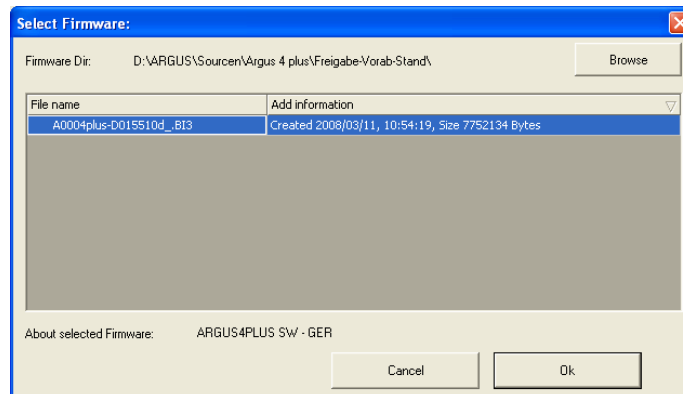


Figure 6: Select the folder in which you have saved the firmware file.

Once you have selected the correct folder and confirmed your selection by clicking on OK (if the OK button is disabled (gray), this indicates that there is no valid file in the folder). If you select the desired file, additional information regarding this file will be displayed below next to the label “About selected Firmware”. If you are satisfied that this is the correct file, click on “OK”.

3 Step 3 of 5 – Verifying the Selection / Starting the Update

The information regarding the firmware file, which you selected, will be displayed in the pane on the right. Make certain that this actually is the firmware file that you wish to use for the update.

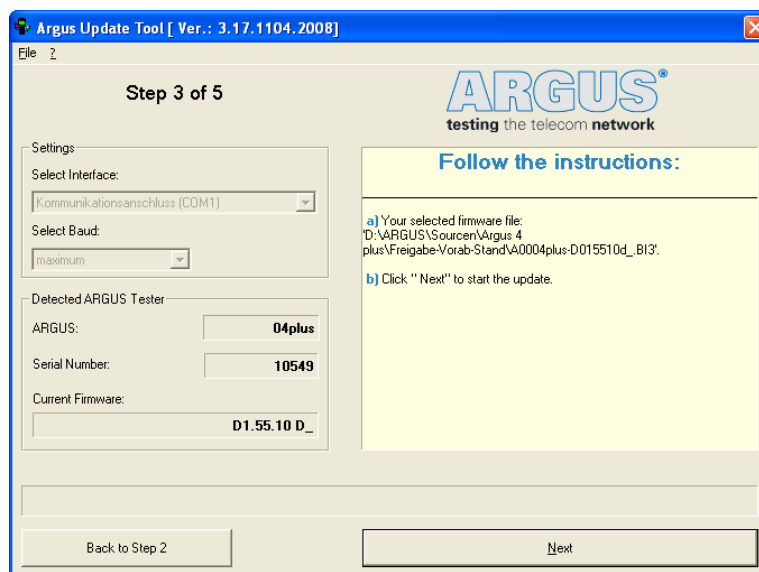


Figure 7: Summary showing all of the settings; click on “Next” to start the update.

Instructions for Updating the ARGUS® Firmware

Once you are certain that you wish to start the update procedure, click on “Next”. The update will begin automatically when the Update Tool moves to “Step 4 of 5”.

If a problem occurs or the selected file is incorrect or possibly even damaged (this occurs rarely, but is possible when files are downloaded from an Internet site), click on “Back to Step 2” to select another file.

4 Step 4 of 5 – The Update Procedure

The actual update procedure begins when the Update Tool moves to “Step 4 of 5”.

Normally the program will automatically move on to “Step 5 of 5”, after it has completed the update process, and report that the update was successfully completed.

In the event that as usual all has gone well, you can skip the next steps (4.1 and 4.2) and proceed on to Chapter 5 on page 8 of these instructions.

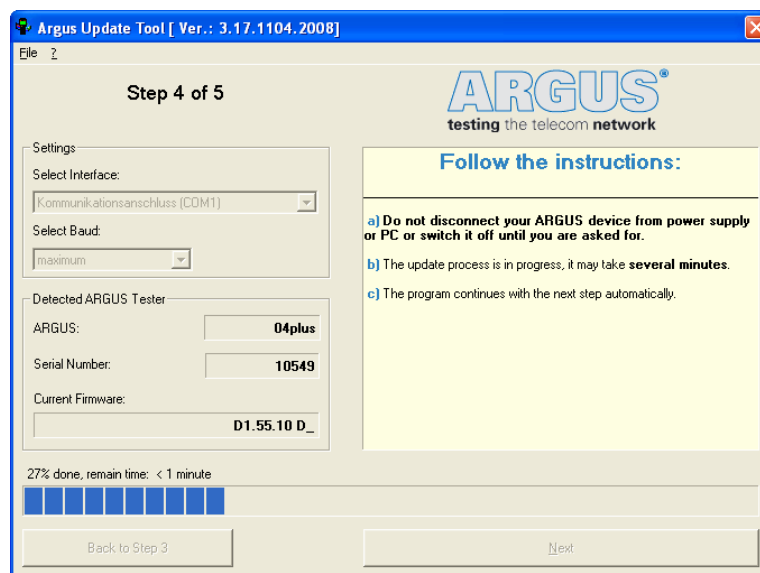


Figure 8: The update procedure begins. This can take several minutes.

If the Update Tool moves from “Step 4 of 5” to “Step 4.1 of 5”, please note the following:

Occasionally, depending on the tester’s current type of firmware and the type of firmware that you are attempting to load into the tester, the Update Tool may proceed through the additional Steps 4.1 and 4.2.

As a rule this only happens if an update file with the extension “*.bi2” was loaded into the tester previously and this tester should now be updated with an update file having a file extension of “*.bi3” or higher.

CAUTION: Do not manually rename the files under any circumstances!

In “Step 4.1 of 5”, the Update Tool must run a second identification procedure on the ARGUS® tester. For this purpose, the ARGUS® must be switched off and then on again. In this manner, the Update Tool will again detect the tester and read out all of the information relevant for the update. The data read out from the tester will be displayed in the formerly disabled (gray) fields on the left under “Detected ARGUS

Instructions for Updating the ARGUS® Firmware

Tester” (“Argus”, “Serial Number” and “Current Firmware”). The ARGUS® tester should now display the message “Waiting for DATA”.

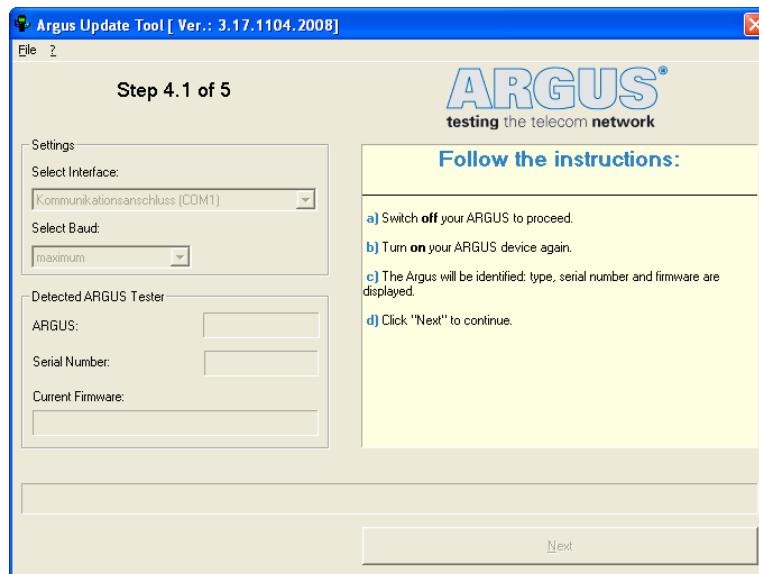


Figure 9: Renewed detection of the tester; the fields are disabled (gray).

The Update Tool will automatically detect and recognize the ARGUS® and read out all of the information relevant for the update. This information will then be displayed in the formerly disabled (gray) fields on the left under “Detected ARGUS Tester”. The ARGUS® tester should now display the message “Waiting for DATA”.

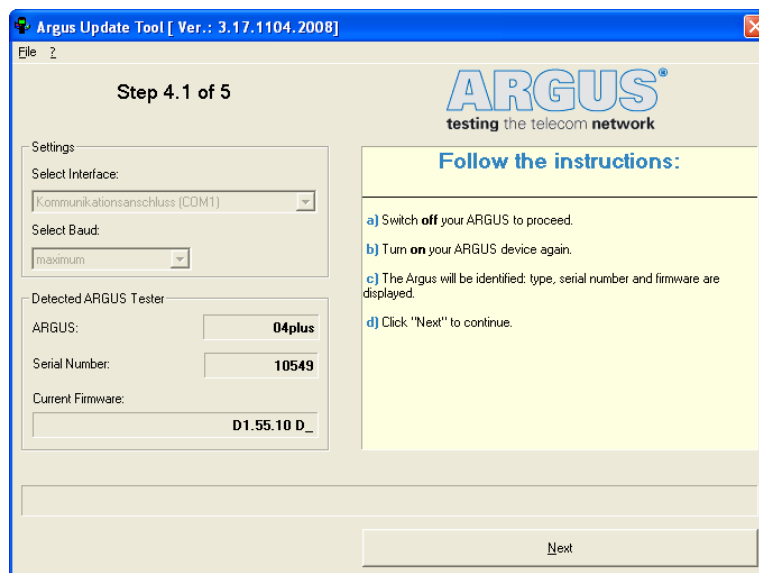


Figure 10: The connected ARGUS® was detected and the relevant information read out.

If you now click on “Next” the second phase of the update procedure will begin. After a few minutes this phase will be concluded, the remaining time will be estimated and displayed in the form of a progress

Instructions for Updating the ARGUS® Firmware

bar at the bottom of the Update Tool window. Once this step is completed, the Update Tool will automatically move on to the next and last step, “Step 5 of 5”.

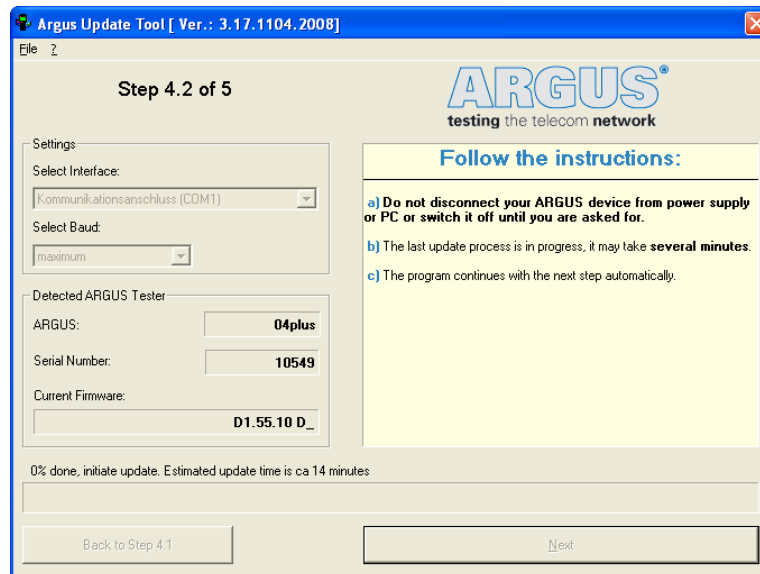


Figure 11: The second phase of the update procedure begins.

5 Step 5 of 5 – Conclusion of the Update

If the Update Tool reports in “Step 5 of 5” that “The firmware of your ARGUS tester has been updated successfully”, the Update Tool has automatically restarted your tester after it reached “Step 5 of 5” and your tester is displaying its usual starting screen, the update procedure was successfully concluded. Afterwards you may disconnect the cable from the PC to the ARGUS® tester as well as the power supply. You may now close the Update Tool and turn off the ARGUS® tester.

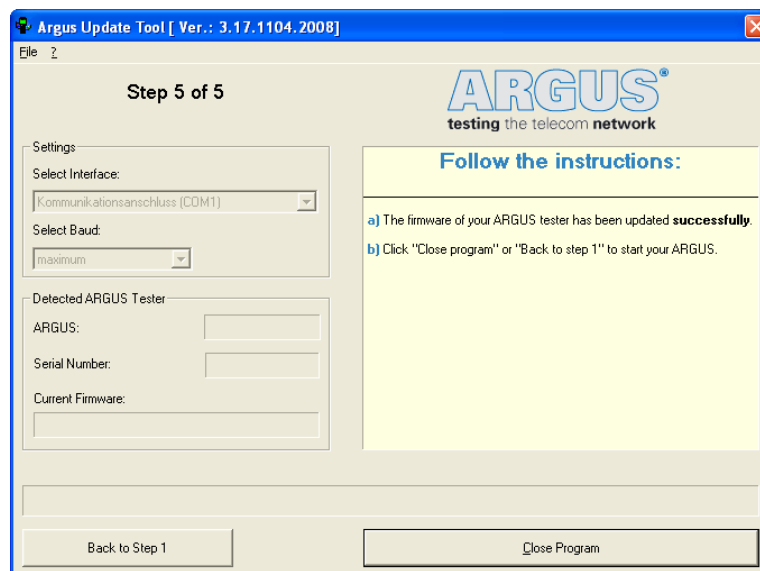


Figure 12: The update has not been successfully concluded until the ARGUS® has been restarted by the Update Tool.